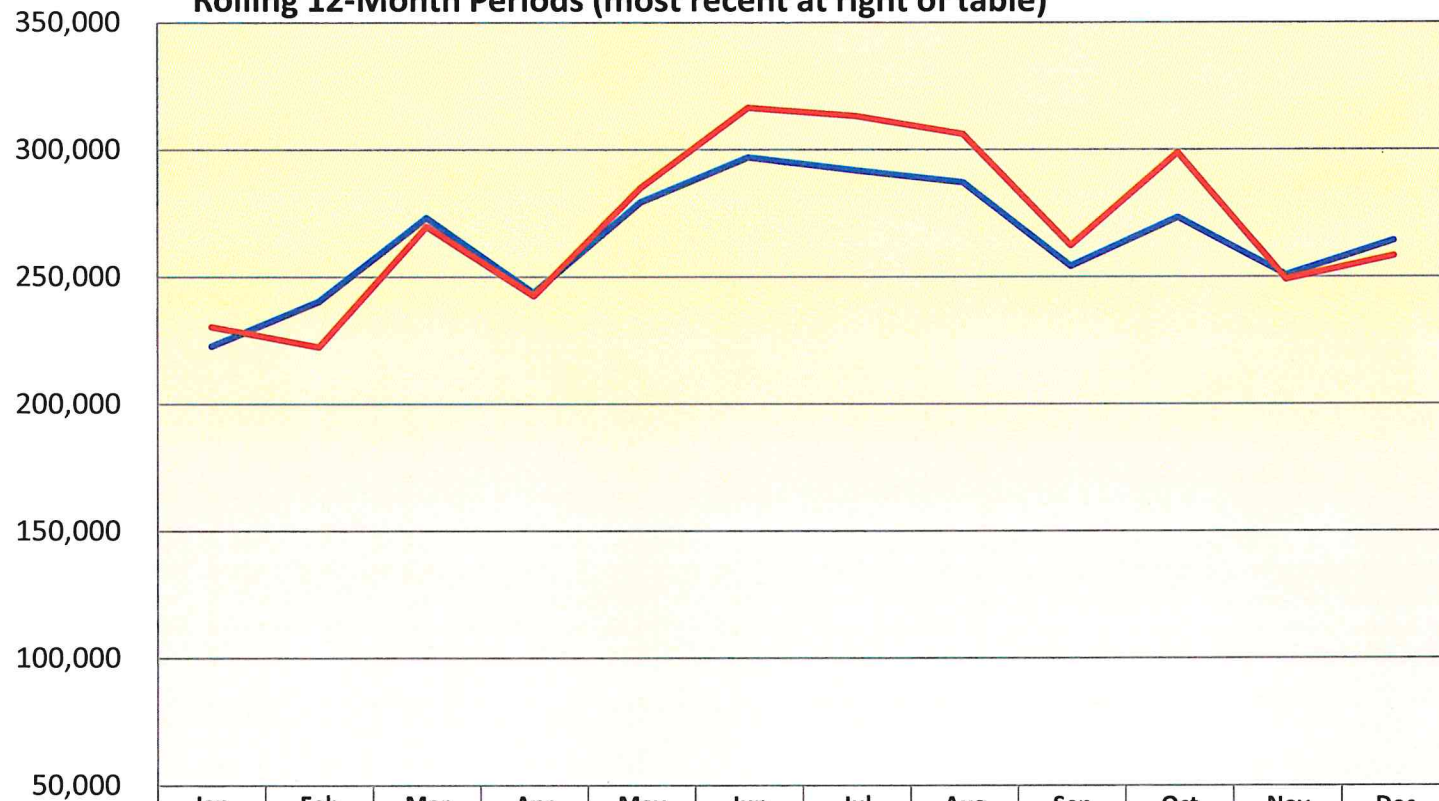


Des Moines Airport Authority  
Traffic Statistics - December 2025

	Month of December		%	Year to Date		%
	2025	2024	Incr. (Decr.)	2025	2024	Incr. (Decr.)
<b>PASSENGERS</b>						
Enplaned	132,825	135,473	-2.0%	1,627,986	1,586,557	2.6%
Deplaned	125,343	128,718	-2.6%	1,626,121	1,590,395	2.2%
Total	258,168	264,191	-2.3%	3,254,107	3,176,952	2.4%
<b>CARGO (LBS)</b>						
Enplaned	1,060,064	1,142,990	-7.3%	13,612,813	23,749,359	-42.7%
Deplaned	1,425,401	1,686,474	-15.5%	18,707,118	27,583,826	-32.2%
Total	2,485,465	2,829,464	-12.2%	32,319,931	51,333,185	-37.0%
<b>TOTAL PASSENGERS</b>						
ALLEGIANANT	50,032	48,548	3.1%	602,637	516,105	16.8%
AMERICAN	75,883	71,518	6.1%	919,087	908,155	1.2%
DELTA	42,902	45,848	-6.4%	569,575	546,426	4.2%
FRONTIER	4,790	3,940	21.6%	51,021	81,824	-37.6%
SOUTHWEST	33,375	37,702	-11.5%	411,336	420,314	-2.1%
UNITED	50,888	53,792	-5.4%	690,459	686,924	0.5%
CHARTERS	298	2,843	-89.5%	9,992	17,204	-41.9%
Total	258,168	264,191	-2.3%	3,254,107	3,176,952	2.4%

## Monthly Passenger Totals

Rolling 12-Month Periods (most recent at right of table)



	Jan	Feb	Mar	Apr	May	Jun	Jul	Aug	Sep	Oct	Nov	Dec
12-24 Months Prior	222,797	240,227	273,216	243,578	279,322	296,918	291,706	287,042	254,027	273,275	250,653	264,191
Prior 12 Months	230,364	222,531	269,770	242,519	284,974	316,449	313,121	306,091	262,374	298,751	248,995	258,168
% change	3.4%	-7.4%	-1.3%	-0.4%	2.0%	6.6%	7.3%	6.6%	3.3%	9.3%	-0.7%	-2.3%

## Passenger Airline Market Share For the Month of December 2025

